

# Eynesbury Echo -16th January 2026

'Love to Learn, Learn to Love'  
#courage #forgiveness #respect

#love #honesty

## Mrs Brown's bit...

### And just like that...

We are already at the end of week 2 in a very short half term. The children returned to school, full of Christmas holiday tales. Everyone soon settled into school routines and we all patiently awaited a sprinkling of snow but it wasn't to be!

Spring term is the 'progress' term. The children start to fly with their learning and work hard to meet those targets that have been set by staff. On training day, we held pupil progress meetings. The teaching staff spoke in depth to leaders about current levels of attainment for the children and their next steps. There will be an opportunity for you to discuss your child's progress at our parent consultation meetings in February.

So, a short half term is already in full swing. We have some nice things planned in for the children, Bikeability for Year 4, Year 3 are going to Flag Fen, and TT Rockstars dress up day to celebrate National Number Day and our push for Times Tables excellence.

Wishing you all a lovely weekend. We will see you all again on Monday at 8:40am for the start of week 3.

As ever, stay well and take care of each other. Have a great weekend!





## Our Eynesbury Eight!



- Our Young Voices concert in Birmingham was cancelled due to the bad weather. Our new date has just been released and is **Thursday 26th February!** Birmingham...here we come...
- Bookings for parent consultations opened. Check your emails. We are offering appointments for the **4th and 11th February.**
- Year 4 had a brilliant session with the Bikeability team, learning new skills and bike safety tips. Great job Year 4!
- We welcomed Father Paul back to school who led our Collective Worship this week and told us all about John the Baptist.

- Our first Celebration assembly of 2026 got off to a brilliant start. Reception class joined us too. Mr Richardson led the assembly for us. There was lots to celebrate.
- I met with Mrs Jones, one of our Co-Chairs of the Governing Body to talk about the term ahead. I also showed Mr Chamberlain, one of our new Governors, around school. The children were all busy, working hard. The atmosphere was lovely and very purposeful.
- Mrs Addison, one of our mums and a Governor too, came into school to share her archeological expertise with Year 3. Experts in the field really help bring the learning alive for our children.
- We held our very last Reception 2026 tour. The tours have been really busy and the applications for places are very strong. We look forward to welcoming new families to school.

***\*\*Please return all copies of the home/school agreement and code of conduct documents that were sent out last term, if you need another set please let us know\*\****

**2026 is the National Year of Reading - designed to tackle the sharp decline in reading among children, young people and adults.**



*1 - The National Year of Reading 2026 is the biggest campaign in a generation designed to help more people (re)discover the joy of reading and make it part of their everyday lives.*

*Reading expands our world and sharpens our minds, yet fewer people are making time to read. The Department of Education campaign asks the nation to Go All In on their passions and interests for 2026 and discover how reading can unlock the things they already love – be that music, football, baking, family-time, sci-fi, or ... anything.*

## Reading matters! Please support us and listen to your child read.

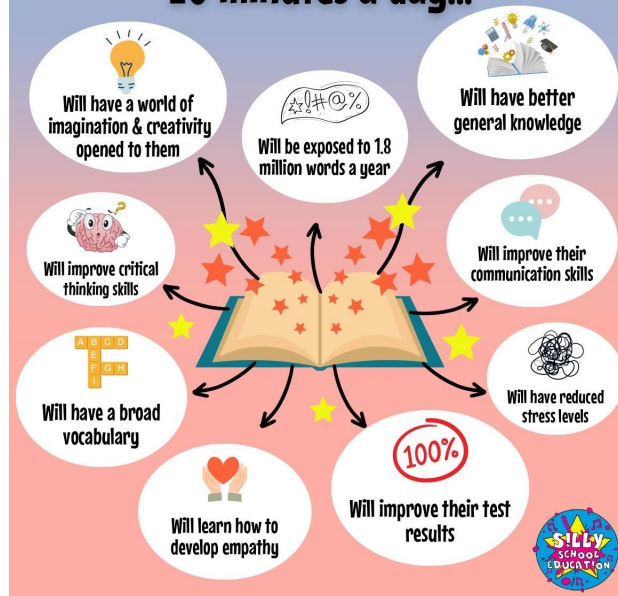
*Reading is the doorway to the world, our children will be able to access everything if they become fluent readers. As a school we are continuing to work hard to develop a great love of reading and a reading culture in our school.*



"The more that you read, the more things you will know. The more that you learn, the more places you'll go." -Dr Seuss

# 20 is plenty!

Children who read for  
20 minutes a day...





Charlie - Year 3

**RESPECTFULNESS SUPERHERO**

Iris - Year 6

Zim - Year 6

Jacob - Year 1

**RECIPROCAL SUPERHERO**

Riley - Year 3

**KINDNESS SUPERHERO**

Grace and Emilia - Year 6

Evelyn and Izzy - Year 5

Olivia and Charlotte - Year 4

Brodie and Jacob - Year 3

Grace and Luna - Year 2

Isabella and Jessica- Year 1

**HEADTEACHER'S AWARD**

Maria for extending her French learning!

**AUTHOR OF THE WEEK**

Ethan - Year 6

George - Year 3

**MATHEMATICIAN OF THE WEEK**

Anita - Year 6

Leon - Year 4

William - Year 3

**CHALLENGER OF THE WEEK**

Teamwork - Iris, Enzo, Sofia, Loki

Theo - Year 3

## Safeguarding at Eynesbury



### Staff 'Keeping our Learning Safe' session:

- This term the focus for staff is Keeping Our Learning safe. Mrs Truman led a session about SEND and Mrs Foster led a session about teaching spelling

### Pupil safeguarding:

- Behaviour expectations
- The children also started working on a Child Friendly Behaviour Policy
- Online Behaviour and digital footprints - **School is working with a group to come in and hold workshops for the children and staff. There will also be a parent session booked in for you to attend. The likely date will be shortly after the Easter holidays. More information to follow.**

## Eynesbury PTA



The PTA are busy meeting and disco and Race Night are planned in this term. Confirmed dates of events will be sent out shortly.

Thank you to the PTA team for the extra opportunities you provide our children with. We really appreciate everything you do.



## We value your support!

We ask that you listen to your child read daily, help them learn to spell correctly, calculate efficiently and 'making the most of every minute to be independent and ambitious' whilst they are in school!

We would also value your feedback on Parent View - [Welcome to Ofsted Parent View | Ofsted Parent View](#)





## PRE -SCHOOL DIARY DATES



### *SHORT TERM DATES (new dates are in bold)*

#### *January 2026 -*

- **Monday 19th January** - All children in for normal hours

#### *February 2026 -*

- **Friday 13th February** - last day of Spring term A
- **Monday 23rd February** - Scholastic Book Fair is in school for a week

#### *March 2026 -*

- **Thursday 5th March** - World Book Day
- **Friday 27th March** - last day of Spring term B

## YEARS R - 6 DIARY DATES



### REGULAR DATES

Every Friday @9.00am – Celebrations in the school hall

### SHORT TERM DATES

#### *January 2026 -*

- Monday 19th January - Multiplication Check Test information session for parents in Year 4
- Wednesday 21st January - Y6 SATs information session for parents in Year 6
- Wednesday 28th January - Eynesbury Football team playing away at Crosshall

#### *February 2026 -*

- Wednesday 4th February - parent consultations in the hall - booking system is now open
- Wednesday 4th February - Y4 collective worship for parents and carers to attend
- Monday 9th to Friday 13th February - Children's Mental Health Week
- Wednesday 11th February - parent consultations in the hall - booking system is now open
- **Thursday 12th February - National Numeracy Day - Come dressed up as a TT Rockstar**
- Friday 13th February - last day of Spring term A
- **Monday 23rd February - Scholastic Book Fair is in school for a week**
- **Wednesday 25th February - Year 3 Flag Fen visit**

## March 2026 -

- Monday 2nd March - House morning - house colours please
- Thursday 5th March - World Book Day
- Monday 9th March to Wednesday 11th March - Grafham residential for Y4
- **Monday 9th March - Maths Workshop for Parents - Multiplication and Division**
- Wednesday 11th March - Y3 collective worship for parents and carers to attend
- **Tuesday 17th March - Maths Workshop for Parents - Mental Calculation and Arithmetic**
- Friday 27th March - last day of Spring term B

## Term dates 2025 to 2026

| Eynesbury Church of England Primary School<br>Term dates 2025 - 2026 |   |    |    |                      |    |     |   |                      |    |    |     |                      |    |    |    |     |     |     |    |    |    |    |  |
|--|---|----|----|----------------------|----|-----|---|----------------------|----|----|-----|----------------------|----|----|----|-----|-----|-----|----|----|----|----|--|
| School Closed  |   |    |    | School Open          |    |     |   |                      |    |    |     |                      |    |    |    |     |     |     |    |    |    |    |  |
| School Holiday   |   |    |    | Bank Holiday         |    |     |   | Staff Training Day   |    |    |     | Pupil Day            |    |    |    |     |     |     |    |    |    |    |  |
| <b>September 2025</b>  |   |    |    | <b>October 2025</b>  |    |     |   | <b>November 2025</b> |    |    |     | <b>December 2025</b> |    |    |    |     |     |     |    |    |    |    |  |
| Mon  | 1 | 8  | 15 | 22                   | 29 | Mon | 6 | 13                   | 20 | 27 | Mon | 3                    | 10 | 17 | 24 | Mon | 8   | 15  | 22 | 29 |    |    |  |
| Tue  | 2 | 9  | 16 | 23                   | 30 | Tue | 7 | 14                   | 21 | 28 | Tue | 4                    | 11 | 18 | 25 | Tue | 2   | 9   | 16 | 23 | 30 |    |  |
| Wed  | 3 | 10 | 17 | 24                   | 31 | Wed | 8 | 15                   | 22 | 29 | Wed | 5                    | 12 | 19 | 26 | Wed | 3   | 10  | 17 | 24 | 31 |    |  |
| Thu  | 4 | 11 | 18 | 25                   |    | Thu | 2 | 9                    | 16 | 23 | 30  | Thu                  | 6  | 13 | 20 | 27  | Thu | 4   | 11 | 18 | 25 |    |  |
| Fri  | 5 | 12 | 19 | 26                   |    | Fri | 3 | 10                   | 17 | 24 | 31  | Fri                  | 7  | 14 | 21 | 28  | Fri | 5   | 12 | 19 | 26 |    |  |
| Sat  | 6 | 13 | 20 | 27                   |    | Sat | 4 | 11                   | 18 | 25 |     | Sat                  | 1  | 8  | 15 | 22  | 29  | Sat | 6  | 13 | 20 | 27 |  |
| Sun  | 7 | 14 | 21 | 28                   |    | Sun | 5 | 12                   | 19 | 26 |     | Sun                  | 2  | 9  | 16 | 23  | 30  | Sun | 7  | 14 | 21 | 28 |  |
| <b>January 2026</b>  |   |    |    | <b>February 2026</b> |    |     |   | <b>March 2026</b>    |    |    |     | <b>April 2026</b>    |    |    |    |     |     |     |    |    |    |    |  |
| Mon  | 1 | 8  | 15 | 22                   | 29 | Mon | 2 | 9                    | 16 | 23 | 30  | Mon                  | 2  | 9  | 16 | 23  | 30  | Mon | 5  | 12 | 19 | 26 |  |
| Tue  | 2 | 9  | 16 | 23                   | 30 | Tue | 3 | 10                   | 17 | 24 | 31  | Tue                  | 3  | 10 | 17 | 24  | 31  | Tue | 6  | 13 | 20 | 27 |  |
| Wed  | 3 | 10 | 17 | 24                   | 31 | Wed | 4 | 11                   | 18 | 25 |     | Wed                  | 4  | 11 | 18 | 25  |     | Wed | 7  | 14 | 21 | 28 |  |
| Thu  | 4 | 11 | 18 | 25                   |    | Thu | 5 | 12                   | 19 | 26 |     | Thu                  | 5  | 12 | 19 | 26  |     | Thu | 8  | 15 | 22 | 29 |  |
| Fri  | 5 | 12 | 19 | 26                   |    | Fri | 6 | 13                   | 20 | 27 |     | Fri                  | 6  | 13 | 20 | 27  |     | Fri | 9  | 16 | 23 | 30 |  |
| Sat  | 6 | 13 | 20 | 27                   |    | Sat | 7 | 14                   | 21 | 28 |     | Sat                  | 7  | 14 | 21 | 28  |     | Sat | 4  | 11 | 18 | 25 |  |
| Sun  | 7 | 14 | 21 | 28                   |    | Sun | 8 | 15                   | 22 | 29 |     | Sun                  | 8  | 15 | 22 | 29  |     | Sun | 5  | 12 | 19 | 26 |  |
| <b>May 2026</b>  |   |    |    | <b>June 2026</b>     |    |     |   | <b>July 2026</b>     |    |    |     | <b>August 2026</b>   |    |    |    |     |     |     |    |    |    |    |  |
| Mon  | 3 | 10 | 17 | 24                   | 31 | Mon | 1 | 8                    | 15 | 22 | 29  | Mon                  | 6  | 13 | 20 | 27  | Mon | 3   | 10 | 17 | 24 | 31 |  |
| Tue  | 4 | 11 | 18 | 25                   |    | Tue | 2 | 9                    | 16 | 23 | 30  | Tue                  | 7  | 14 | 21 | 28  | Tue | 4   | 11 | 18 | 25 |    |  |
| Wed  | 5 | 12 | 19 | 26                   |    | Wed | 3 | 10                   | 17 | 24 | 31  | Wed                  | 8  | 15 | 22 | 29  | Wed | 5   | 12 | 19 | 26 |    |  |
| Thu  | 6 | 13 | 20 | 27                   |    | Thu | 4 | 11                   | 18 | 25 |     | Thu                  | 9  | 16 | 23 | 30  | Thu | 6   | 13 | 20 | 27 |    |  |
| Fri  | 7 | 14 | 21 | 28                   |    | Fri | 5 | 12                   | 19 | 26 |     | Fri                  | 10 | 17 | 24 | 31  | Fri | 7   | 14 | 21 | 28 |    |  |
| Sat  | 8 | 15 | 22 | 29                   |    | Sat | 6 | 13                   | 20 | 27 |     | Sat                  | 11 | 18 | 25 |     | Sat | 8   | 15 | 22 | 29 |    |  |
| Sun  | 9 | 16 | 23 | 30                   |    | Sun | 7 | 14                   | 21 | 28 |     | Sun                  | 12 | 19 | 26 |     | Sun | 9   | 16 | 23 | 30 |    |  |

Autumn term 2025 – 73 school days, Spring term 2026 – 54 school days, Summer term 2026 – 63 school days: TOTAL 190 school days.  
The school will be closed for 5 training days in accordance with Teachers' Conditions of Service (1<sup>st</sup> September 2025, 24<sup>th</sup> October 2025, 9<sup>th</sup> January 2026, 15<sup>th</sup>, 1<sup>st</sup> June 2026 and 20<sup>th</sup> July 2026). The school will be closed for 65 days for school holidays (including Bank holidays). This does not include weekends.

## OFFICE, SUPPORT AND COMMUNITY UPDATES!



Any family issues, upsets or concerns? IN THE FIRST INSTANCE PLEASE CONTACT YOUR CHILD'S CLASSTEACHER – they will be able to signpost you to a Family Support Worker **OR** email

[sen@eynesbury.cambs.sch.uk](mailto:sen@eynesbury.cambs.sch.uk) . Any questions or concerns around SEND (Special Educational Needs or Disabilities)? Email: [sen@eynesbury.cambs.sch.uk](mailto:sen@eynesbury.cambs.sch.uk)

**\*\*STOP PRESS\*\***



#### **Updated information**

*Please ensure your children's information is correct and all of your contact details are correct so that we can ensure our system is up to date. Thank you for your support!*

#### Getting in touch



#### **Contact us at:**

Eynesbury Church of England Primary School

Montagu Street, Eynesbury, St Neots, Cambs PE19 2TD

Tel: 01480 398028

Email: [office@eynesbury.cambs.sch.uk](mailto:office@eynesbury.cambs.sch.uk)

Website: [www.eynesburyschool.co.uk](http://www.eynesburyschool.co.uk)

Follow us:

- X (Twitter) - @EynesburyCofE1