

Eynesbury Echo -5th September 2025

'Love to Learn, Learn to Love'
#courage #forgiveness #respect

#love #honesty

Mrs Brown's bit...

Welcome back!

Welcome back to what I hope will be a happy year for everyone.

The children raced through the gate on Tuesday as if they had never been away which was wonderful to see. They were excited to be in their new classes and with new teachers. They settled in quickly and we were soon back into our learning routines and school life.

Many of you came to our Meet the Teacher sessions on Wednesday. You will have received a pack of information including an updated Home/School agreement and Code of Conduct for us all to be considerate of. Please send signed copies back to your class teachers.

Our diary dates are filling up and so we will keep you abreast with any new ones as the term progresses.

This week's Echo is only a short version but please look out for the next one on September 19th!

Wishing you all a wonderful weekend. We look forward to seeing you on Monday 8th September at 8:40am. As ever, stay safe and look after each other.



Eynesbury Church of England Primary
School

'Love to Learn, Learn to Love'



Code of conduct agreement

September 2025 to July 2026

It is extremely important to have a strong home/school partnership in order to give your child the best support they need during their time here at Eynesbury Church of England Primary School.
We want all members of our school community to be treated with respect, dignity and politeness.

Eynesbury Church of England Primary
School

'Love to Learn, Learn to Love'



Home School Agreement

September 2025 to July 2026

It is extremely important to have a strong home/school partnership in order to give your child the best support they need during their time here at Eynesbury Church of England Primary School.
We would like all children to understand and be part of this agreement, therefore please sit with your child, read and sign this document in the appropriate places and return a copy to us.

Our Eynesbury Eight!



- School and our classrooms looked friendly and inviting, ready for the start of term. New displays are popping up to support our learning environment.
- We welcomed Mrs Dickinson, Ms Savage, Miss Blackburn and Mr Richardson to the Eynesbury family. We hope you have had an enjoyable first week with us!
- Mrs Cummings has started to welcome her new Reception children to school and new Pre-Schoolers are starting too.
- We also have new families starting across the school. We hope you will be happy at Eynesbury!
- Over the summer, some rooms were decorated, new equipment was ordered and now our brand new books are being written in. Exciting times!
- Mrs Wainwright has started teaching us a selection of Harvest songs ready for Harvest Festival.
- We have already taken phone calls in respect of starting school in September 2026. Please see the attached leaflet with the dates for tours around school.
- The diary date section has been updated. Please be sure to take a look!

**Eynesbury Church of
England Primary School**



**NEW ENTRANTS VISITS FOR FAMILIES
OF CHILDREN STARTING SCHOOL IN
SEPTEMBER 2026**



Wednesday 24th September 2025
Wednesday 15th October 2025
Wednesday 12th November 2025
Wednesday 10th December 2025
Wednesday 7th January 2026
Visits will take place at 9.30am

PLEASE EMAIL
office@eynesbury.cambs.sch.uk
OR RING 01480 398028 to join
us for a visit!

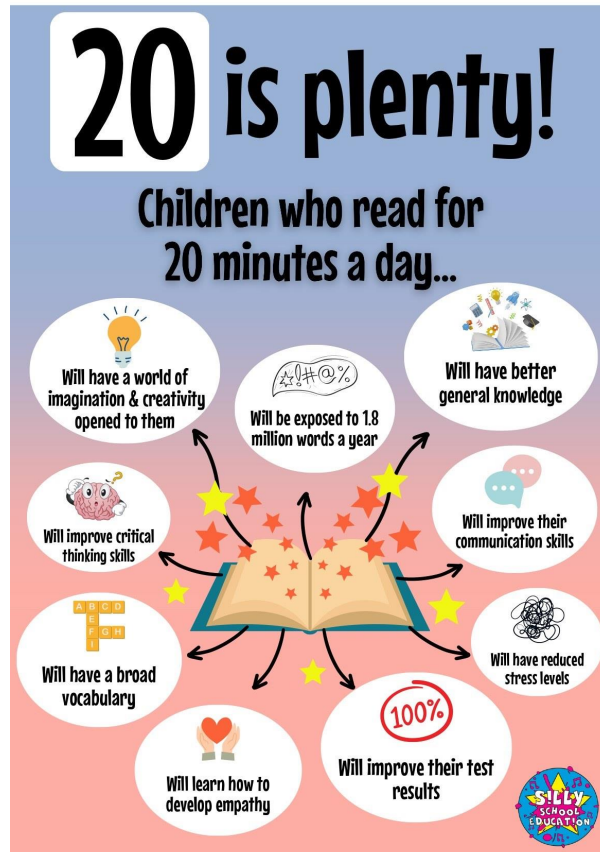
**ALL VISITS TO SCHOOL WILL TAKE PLACE SCHOOL HOURS.
WE ARE PLEASED TO WELCOME YOU TO EYNESBURY!**

Reading matters! Please support us and listen to your child read.

Reading is the doorway to the world, our children will be able to access everything if they become fluent readers. As a school we are continuing to work hard to develop a great love of reading and a reading culture in our school.



"The more that you
read, the more things
you will know. The
more that you learn,
the more places you'll
go." -Dr Seuss



This week's whole school attendance: 98.8%



Congratulations, our attendance award winners are Years 1 and 3! Well done to you all!

Reception - new entrant starts

Year 1 - 100%

Year 2 - 98.9%

Year 3 - 100%

Year 4 - 99.5%

Year 5 - 96.4%

Year 6 - 97.7%

Our 5R Superheroes #respectfulness #resourcefulness #resilience #reflectiveness # reciprocity

RESILIENCE SUPERHERO

Toby - Year 1

Henry - Year 3

Maisie - Year 4

RECIPROCITY SUPERHERO

-

RESOURCEFULNESS SUPERHERO

Joshua - Year 5

Emily - Year 6

RESPECTFULNESS SUPERHERO

Thea - Year 2

REFLECTIVENESS SUPERHERO

-

HEADTEACHER'S AWARD

Jack - Year 6

Safeguarding at Eynesbury



Staff Safeguarding:

- Safeguarding and Child Protection statutory refresher training for all staff

Pupil safeguarding:

- Managing our behaviour

Eynesbury PTA AGM

The AGM will take place on Thursday 11th September at 8pm.



We value your support!

We ask that you listen to your child read daily, help them learn to spell correctly, calculate efficiently and 'making the most of every minute to be independent and ambitious' whilst they are in school!

We would also value your feedback on Parent View - [Welcome to Ofsted Parent View | Ofsted Parent View](#)





PRE -SCHOOL DIARY DATES



SHORT TERM DATES (new dates are in bold)

September 2025 -

- Friday 5th September- original children return
- Monday 8th September- new starters settle for 2 weeks.
- Monday 22nd September- Everyone attending normal hours.

YEARS R - 6 DIARY DATES



REGULAR DATES

Every Friday @9. 00am – Celebrations in the school hall

SHORT TERM DATES

September 2025 -

- **Tuesday 23rd September - Flu Vaccinations**
- **Wednesday 24th September - Harvest Festival in Church at 9:15am (date and time to be confirmed)**
- **Thursday 25th September - Brain Buddies workshop for Year 5**

October 2025 -

- **Thursday 2nd October - Performance Poetry Day**
- **Monday 6th October to Friday 10th October - Year 5 Isle of Wight residential**
- **Monday 13th October - House Morning - please wear house colour tee shirts**
- **Wednesday 15th October - Collective Worship led by Year 6 at 9:05am**
- **Friday 17th October - Magistrates Visit for Year 6**
- **Thursday 23rd October - End of Autumn A. School closes for half term at 3:15pm**
- **Friday 24th October - staff training day**

November 2025 -

- **Monday 3rd November - School opens for Autumn B at 8:40am**
- **Tuesday 4th November - Individual and sibling photo day**
- **Wednesday 5th November - Remembrance Service in Church at 9:15am (date and time to be confirmed)**
- **Monday 10th to Friday 14th November - Anti-bullying week**
- **Thursday 13th November - House Morning - please wear house colour tee shirts**
- **Wednesday 26th October - Collective Worship led by Year 5 at 9:05am**

December 2025 -

- **Monday 8th November to Friday 12th November - Year 6 Hilltop residential**
- **Wednesday 10th and Thursday 11th December - KS1 play for parents (date and time to be confirmed)**
- **Wednesday 17th December - Years 1-6 Panto visit - Milton Keynes**

- Thursday 18th December - Christmas Church service @2pm (date and time to be confirmed)
- Friday 19th December - End of Autumn term. School closes for Christmas at 3:15pm

Term dates 2025 to 2026

Eynesbury Church of England Primary School
Term dates 2025 - 2026

School Closed		School Open	
School Holiday	Bank Holiday	Staff Training Day	Pupil Day
September 2025			
Mon	1 8 15 22 29	Mon	6 13 20 27
Tue	2 9 16 23 30	Tue	7 14 21 28
Wed	3 10 17 24	Wed	1 8 15 22 29
Thu	4 11 18 25	Thu	2 9 16 23 30
Fri	5 12 19 26	Fri	3 10 17 24 31
Sat	6 13 20 27	Sat	4 11 18 25
Sun	7 14 21 28	Sun	5 12 19 26
October 2025			
Mon	2 9 16 23 30	Mon	3 10 17 24
Tue	3 10 17 24	Tue	4 11 18 25
Wed	4 11 18 25	Wed	5 12 19 26
Thu	5 12 19 26	Thu	6 13 20 27
Fri	6 13 20 27	Fri	7 14 21 28
Sat	7 14 21 28	Sat	1 8 15 22 29
Sun	8 15 22 29	Sun	2 9 16 23 30
November 2025			
Mon	1 8 15 22 29	Mon	2 9 16 23 30
Tue	2 9 16 23 30	Tue	3 10 17 24
Wed	3 10 17 24	Wed	4 11 18 25
Thu	4 11 18 25	Thu	5 12 19 26
Fri	5 12 19 26	Fri	6 13 20 27
Sat	6 13 20 27	Sat	7 14 21 28
Sun	7 14 21 28	Sun	1 8 15 22 29
December 2025			
Mon	1 8 15 22 29	Mon	2 9 16 23 30
Tue	2 9 16 23 30	Tue	3 10 17 24
Wed	3 10 17 24	Wed	4 11 18 25
Thu	4 11 18 25	Thu	5 12 19 26
Fri	5 12 19 26	Fri	6 13 20 27
Sat	6 13 20 27	Sat	7 14 21 28
Sun	7 14 21 28	Sun	1 8 15 22 29
January 2026			
Mon	5 12 19 26	Mon	2 9 16 23 30
Tue	6 13 20 27	Tue	3 10 17 24
Wed	7 14 21 28	Wed	4 11 18 25
Thu	1 8 15 22 29	Thu	5 12 19 26
Fri	2 9 16 23 30	Fri	6 13 20 27
Sat	3 10 17 24 31	Sat	7 14 21 28
Sun	4 11 18 25	Sun	1 8 15 22 29
February 2026			
Mon	2 9 16 23 30	Mon	2 9 16 23 30
Tue	3 10 17 24	Tue	3 10 17 24
Wed	4 11 18 25	Wed	4 11 18 25
Thu	5 12 19 26	Thu	5 12 19 26
Fri	6 13 20 27	Fri	6 13 20 27
Sat	7 14 21 28	Sat	7 14 21 28
Sun	1 8 15 22 29	Sun	1 8 15 22 29
March 2026			
Mon	2 9 16 23 30	Mon	2 9 16 23 30
Tue	3 10 17 24	Tue	3 10 17 24
Wed	4 11 18 25	Wed	4 11 18 25
Thu	5 12 19 26	Thu	5 12 19 26
Fri	6 13 20 27	Fri	6 13 20 27
Sat	7 14 21 28	Sat	7 14 21 28
Sun	1 8 15 22 29	Sun	1 8 15 22 29
April 2026			
Mon	1 8 15 22 29	Mon	1 8 15 22 29
Tue	2 9 16 23 30	Tue	2 9 16 23 30
Wed	3 10 17 24	Wed	3 10 17 24
Thu	4 11 18 25	Thu	4 11 18 25
Fri	5 12 19 26	Fri	5 12 19 26
Sat	6 13 20 27	Sat	6 13 20 27
Sun	7 14 21 28	Sun	7 14 21 28
May 2026			
Mon	4 11 18 25	Mon	4 11 18 25
Tue	5 12 19 26	Tue	5 12 19 26
Wed	6 13 20 27	Wed	6 13 20 27
Thu	7 14 21 28	Thu	7 14 21 28
Fri	1 8 15 22 29	Fri	1 8 15 22 29
Sat	2 9 16 23 30	Sat	2 9 16 23 30
Sun	3 10 17 24 31	Sun	3 10 17 24 31
June 2026			
Mon	1 8 15 22 29	Mon	1 8 15 22 29
Tue	2 9 16 23 30	Tue	2 9 16 23 30
Wed	3 10 17 24	Wed	3 10 17 24
Thu	4 11 18 25	Thu	4 11 18 25
Fri	5 12 19 26	Fri	5 12 19 26
Sat	6 13 20 27	Sat	6 13 20 27
Sun	7 14 21 28	Sun	7 14 21 28
July 2026			
Mon	6 13 20 27	Mon	6 13 20 27
Tue	7 14 21 28	Tue	7 14 21 28
Wed	1 8 15 22 29	Wed	1 8 15 22 29
Thu	2 9 16 23 30	Thu	2 9 16 23 30
Fri	3 10 17 24 31	Fri	3 10 17 24 31
Sat	4 11 18 25	Sat	4 11 18 25
Sun	5 12 19 26	Sun	5 12 19 26
August 2026			
Mon	4 11 18 25	Mon	4 11 18 25
Tue	5 12 19 26	Tue	5 12 19 26
Wed	6 13 20 27	Wed	6 13 20 27
Thu	7 14 21 28	Thu	7 14 21 28
Fri	1 8 15 22 29	Fri	1 8 15 22 29
Sat	2 9 16 23 30	Sat	2 9 16 23 30
Sun	3 10 17 24 31	Sun	3 10 17 24 31

Autumn term 2025 – 73 school days, Spring term 2026 – 64 school days, Summer term 2026 – 63 school days: TOTAL 199 school days.
The school will be closed for 5 training days in accordance with Teachers' Conditions of Service (1st September 2025, 24th October 2025, 8th January 2026, 1st, 1st June 2026 and 27th July 2026). The school will be closed for 65 days for school holidays (including Bank holidays). This does not include weekends.

OFFICE, SUPPORT AND COMMUNITY UPDATES!



Any family issues, upsets or concerns? IN THE FIRST INSTANCE PLEASE CONTACT YOUR CHILD'S CLASSTEACHER – they will be able to signpost you to a Family Support Worker **OR** email sen@eynesbury.cambs.sch.uk . Any questions or concerns around SEND (Special Educational Needs or Disabilities)? Email: sen@eynesbury.cambs.sch.uk

****STOP PRESS****



Updated information

Please ensure your children's information is correct and all of your contact details are correct so that we can ensure our system is up to date. Thank you for your support!

Getting in touch



Contact us at:

Eynesbury Church of England Primary School

Montagu Street, Eynesbury, St Neots, Cambs PE19 2TD

Tel: 01480 398028

Email: office@eynesbury.cambs.sch.uk

Website: www.eynesburyschool.co.uk

Follow us:

- X (Twitter) - @EynesburyCofE1